

Getting Started with Olectra Chart™

License Agreement ■ Installation
Product Overview ■ New Features
Technical Support

Version 5.0



260 King Street East
Toronto, Ontario, Canada M5A 1K3
(416) 594-1026
www.klg.com

Copyright © 1996 – 1998 by KL Group Inc. All rights reserved.

KL Group, the KL Group logo, Olectra and Olectra Chart are trademarks of KL Group Inc.

Microsoft, MS-DOS, Visual Basic, and Windows are registered trademarks, and Windows NT is a trademark of Microsoft Corporation.

All other products, names, and services are trademarks or registered trademarks of their respective companies or organizations.

Printed in Canada on recycled paper.



OLECTRA BINARY LICENSE AGREEMENT

Important — Read Carefully Before Opening Software Package(s)

By opening the sealed software package, or installing, or using this product, you indicate your acceptance of the following Olectra Binary License Agreement. This is a legal agreement between you (either an individual or an entity) and KL Group Inc. If you do not accept and agree with all of the terms of this agreement, promptly return the unopened software package and all other materials with proof of payment to your place of purchase, and your license fee will be refunded.

SOFTWARE LICENSE

1) Grant of License. This License Agreement ("License") permits you to use one copy of the software contained in the sealed software package and documented in this manual, which may include electronic documentation (the "SOFTWARE"), on a single computer. If you have purchased a volume "right to copy" license, then you may copy and use the SOFTWARE on the permitted number of computers (e.g. A "right to copy 10" license allows you to use the software on up to 10 computers.). The SOFTWARE is in "use" on a computer when it is loaded into temporary memory (i.e. RAM) or installed into permanent memory (e.g. hard disk, CD-ROM, or other storage device) of that computer, except that a copy installed on a network server for the sole purpose of distribution to other computers is not "in use".

2) Upgrades. If the SOFTWARE is an upgrade you may use or transfer the SOFTWARE only in conjunction with the prior version(s) of the SOFTWARE.

3) Copyright. The SOFTWARE (including any images, photographs and text incorporated into the SOFTWARE) is owned by KL Group or its suppliers and is protected by Canadian, United States and other countries' copyright laws and international treaty provisions. Therefore you must treat the SOFTWARE like any other copyrighted material (e.g., a book or musical recording) and not reproduce it except that you either (a) make one copy of the SOFTWARE solely for backup or archival purposes, or (b) transfer the SOFTWARE to a single hard disk provided you keep the original solely for backup or archival purposes. You may not copy the printed materials accompanying the SOFTWARE.

4) Other Restrictions. You may not rent or lease the SOFTWARE, but you may transfer the SOFTWARE and accompanying written materials on a permanent basis provided you retain no copies and the recipient agrees to the terms of this License Agreement. If the SOFTWARE is an upgrade, any transfer must include the most recent upgrade and all prior versions. You may not reverse engineer, decompile, disassemble, or translate the SOFTWARE, except to the extent such foregoing restriction is expressly prohibited by applicable law.

5) Dual-media Software. You may receive the SOFTWARE in more than one medium. Regardless of the type or size of medium you receive, you may use only the medium appropriate for your single-user computer. You may not use the other medium on another computer or loan, rent, lease, or transfer the disks to another user except as part of the permanent transfer (as provided above) of all SOFTWARE and printed materials, nor print copies of any user documentation provided in "online" or electronic form.

6) Distribution of applications you build with the SOFTWARE. You have a royalty-free right to reproduce and distribute the run-time modules of the SOFTWARE provided that you: (a) distribute the run-time modules only in conjunction with and as a part of your software product; (b) your software product is an end-user application, not a development tool; (c) do not use KL Group's name, logo or trademark to market your software product; (d) include a valid copyright notice on your software product; and (e) agree to indemnify, hold harmless, and defend KL Group and its suppliers from and against any claims or lawsuits, including attorney's fees, that arise or result from the use or distribution of your software product. The "run-time modules" are those files in the SOFTWARE that are identified in the accompanying printed materials as required during execution of your software program.

LIMITED WARRANTY

Limited Warranty. KL Group warrants that the SOFTWARE will perform substantially in accordance with the accompanying written materials for a period of ninety (90) days from the date of receipt. Some states/jurisdictions do not allow limitations on duration of an implied warranty, so the above limitation may not apply to you. This warranty may not be assigned.

Customer Remedies. KL Group's and its suppliers' entire liability and your exclusive remedy shall be, at KL Group's option, either (a) return of the price paid, or (b) repair or replacement of the SOFTWARE that does not meet KL Group's Limited Warranty and which is returned to KL Group with a copy of your receipt. This Limited Warranty is void if failure of the SOFTWARE has resulted from accident, abuse, or misapplication. Any replacement SOFTWARE will be warranted for the remainder of the original warranty period or thirty (30) days, whichever is longer.

No Other Warranties. To the maximum extent permitted by applicable law, KL Group and its suppliers disclaim all other warranties, either express or implied, including, but not limited to, implied warranties of merchantability and fitness for a particular purpose, with regard to the SOFTWARE and the accompanying printed materials. This limited warranty gives you specific legal rights. You may have others which vary from state/jurisdiction to state/jurisdiction.

No Liability for Consequential Damages. To the maximum extent permitted by applicable laws, in no event shall KL Group or its suppliers be liable for any damages whatsoever (including without limitation, damages for loss of business profits, business interruption, loss of information, or other pecuniary loss) arising out of the use of or inability to use this KL Group product, even if KL Group has been advised of the possibility of such damages. Because some states/jurisdictions do not allow the exclusion or limitation of liability for consequential or incidental damages, the above limitation may not apply to you.

U.S. GOVERNMENT RESTRICTED RIGHTS

The SOFTWARE and documentation are provided with RESTRICTED RIGHTS. Use, duplication, or disclosure by the U.S. Government is subject to restrictions as set forth in subparagraph (c)(1)(ii) of the Rights in Technical Data and Computer Software clause at DFARS 252.227-7013 or subparagraphs (c)(1) and (2) of the Commercial Computer Software — Restricted Rights at 48 CFR 52.227-19, as applicable. Manufacturer is KL Group Inc., 260 King Street East, Toronto, Ontario Canada, M5A 1K3.

This Agreement is governed by the laws of the Province of Ontario, Canada. Each of the parties hereto irrevocably attorns to the jurisdiction of the courts of the Province of Ontario.

Should you have questions concerning this Agreement, or if you desire to contact KL Group for any reason, please write:

KL Group Inc.
260 King Street East
Toronto, Ontario
Canada, M5A 1K3
Phone (416) 594-1026
Fax (416) 594-1919

Table of Contents

Installing Olectra Chart	1
Before You Begin	1
Minimum Requirements	1
Installing the Product	2
Files Installed	2
Removing Olectra Chart.	3
Olectra Chart Overview	5
2D and 3D Charting in OCX and DLL Formats	5
Olectra Chart OCX/DLL Control Model	6
Quick Start Overview for OCX Programmers	7
Quick Start Overview for DLL Programmers.	8
Distributing Olectra Chart Applications.	8
Summary of New Features in 5.0	9
New Features in 2D Chart	9
New Features in 3D Chart	12
Technical Support & Feedback	15
Technical Support Plans	15
How to Get Technical Support	15
Olectra Developers Forums	16
Give us Feedback	17

Installing Olectra Chart

Before You Begin ■ *Minimum Requirements*
Installing the Product ■ *Files Installed*
Removing Olectra Chart

Before You Begin

Be sure that your system and development environment are set up correctly before installing Olectra Chart. You must be able to create and run simple Windows applications before attempting to use Olectra Chart.

Minimum Requirements

The following lists the minimum operating system and development environment version requirements for Olectra Chart. Olectra Chart does not add to the system requirements of your development environment.

	16-bit Version	32-bit Version
Operating System	Windows 3.1	Windows 95 or Windows NT 3.51 or 4.0
OCX Development Environments	Any development environment that supports 16- or 32-bit OCX custom controls, including: <ul style="list-style-type: none">■ Visual Basic 4 (16-bit)	Any development environment that supports 16- or 32-bit OCX custom controls, including: <ul style="list-style-type: none">■ Visual Basic 4 (32-bit)■ Visual Basic 5■ Visual C++ 4.x, 5.0■ Delphi 2.01, 3.0 Client Server■ PowerBuilder 5.0.4■ C++ Builder 1.0
DLL Development Environments	Any development environment that supports 16- or 32-bit DLL custom controls, including: <ul style="list-style-type: none">■ Visual C++ 1.5■ Borland C++ 4.5■ MFC 2.5, OWL 2.5	Any development environment that supports 16- or 32-bit DLL custom controls, including: <ul style="list-style-type: none">■ Visual C++ 4.x, 5.0■ Borland C++ 4.5, 5.0■ MFC 4.x, OWL 2.5

Installing the Product

To install either the 16- or 32-bit version of Olectra Chart:

1. Start Windows (if not already started). As a precaution, shut down any applications that may be currently running.
2. If you have a previous version of Olectra Chart installed on your system, make sure you uninstall it before proceeding with the new installation.
3. Insert the Olectra Chart 5.0 CD-ROM into a drive on your system.
4. To setup Olectra Chart, do one of the following:
 - If using Program Manager as your shell, select “Run” from Program Manager’s “File” menu. Enter “*D:\SETUP*” in the dialog (replace D: with your CD-ROM drive) and click OK.
 - If using the Windows 95 or NT 4.0 shell, select “Run” from the “Start” button menu. Enter “*D:\SETUP*” in the dialog (replace D: with your CD-ROM drive) and click OK.
5. In the Setup dialog, click either the 16-bit or 32-bit Installation button. The appropriate setup program will start.

If you are installing Olectra Chart using Windows 3.x, this dialog will not appear, and the 16-bit setup program will launch automatically.

Follow the instructions on the screen to select the parts to install and where to install it. If you install either OCX, it is registered automatically.

Note

- If you are using Delphi 2.01, make sure you remove Olectra Chart from the Component Palette before proceeding with the installation.

Files Installed

The setup program installs the product into C:\OLECTRA by default. Subdirectories contain the sample code, include files, constants files and import libraries appropriate to the parts of the product you installed. The following files are placed in your Windows SYSTEM (or SYSTEM32) directory if they do not exist or are older, depending on the parts of the product you installed:

OCX Installation	16-bit Files	32-bit Files
Support Files	OC25.DLL, VB40016.DLL, COMDLG16.OCX, GRID16.OCX, TABCTL16.OCX, OLCHART.LIC, XRTCLIBB.DLL	MFC40.DLL, MSVCRT40.DLL, OLEPRO32.DLL, VB40032.DLL, COMDLG32.OCX, GRID32.OCX, TABCTL32.OCX, WININET.DLL, URLMON.DLL, OLCHART.LIC
2D Chart OCX	OLCH2X16.OCX, OLCH2D16.DLL	OLCH2X32.OCX

OCX Installation	16-bit Files	32-bit Files
Online Help	OLCH2D-P.HLP, OLCH2D-P.CNT, OLCH2D-U.HLP, OLCH2D-U.CNT	
3D Chart OCX	OLCH3X16.OCX OLCH3D16.DLL	OLCH3X32.OCX
Online Help	OLCH3D-P.HLP, OLCH3D-P.CNT, OLCH3D-U.HLP, OLCH3D-U.CNT	

DLL Installation	16-bit Files	32-bit Files
Support Files	XRTCLIBB.DLL	
2D Chart DLL	OLCH2D16.DLL	OLCH2D32.DLL
3D Chart DLL	OLCH3D16.DLL	OLCH3D32.DLL

Removing Olectra Chart

To remove Olectra Chart from your system, run the automated “uninstall” program included with the product. If you using Windows 3.1 or Windows NT 3.51, an uninstall icon is located in the Olectra Chart program group. If you are using Windows 95 or Windows NT 4.0, use the “Add/Remove Programs” icon located in the Control Panel.

If the program does not remove all of the files listed in the previous section, you may delete them manually. Take care not to remove support files that are needed by other applications on your system.

Olectra Chart Overview

2D and 3D Charting in OCX and DLL Formats ■ *Olectra Chart OCX/DLL Control Model*
Quick Start Overview for OCX Programmers ■ *Quick Start Overview for DLL Programmers*
Distributing Olectra Chart Applications

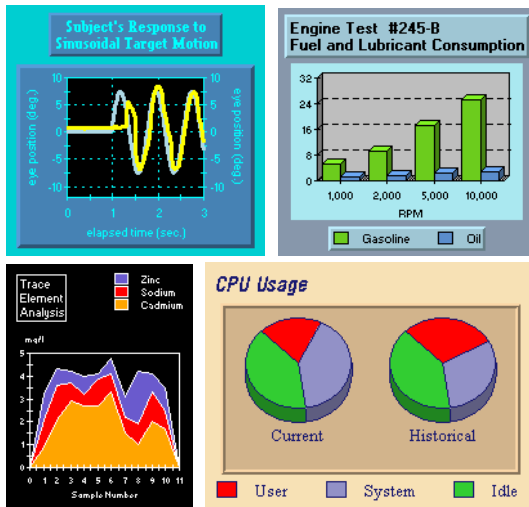
2D and 3D Charting in OCX and DLL Formats

Olectra Chart provides a 2D and a 3D chart control that you can use in your Windows applications to provide your users with professional information display and manipulation capabilities. Each control is available as a distinct OCX and DLL custom control, for 16-bit or 32-bit Windows applications.

The OCXs have a full object-based API that make them easy to program with visual development environments like Visual Basic, Visual C++, or Delphi. The DLLs have a C API with MFC and OWL wrappers and can be used with any development environment that supports DLL custom controls.

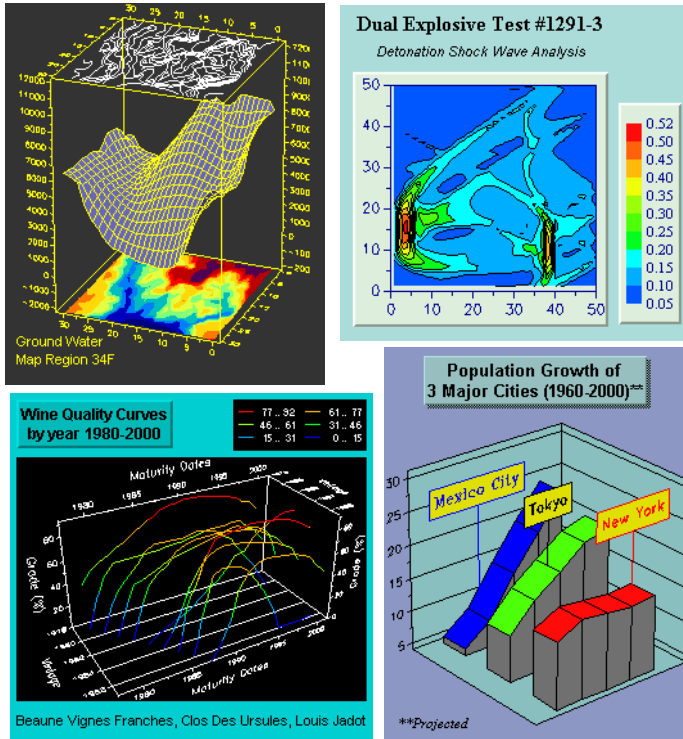
2D Chart Control

Use the 2D Chart to display data as a bar, X-Y plot, area, stacking bar, pie, radar, filled radar, polar, candle or combination chart. 2D Chart is optimized for real-time applications displaying rapidly changing data.



3D Chart Control

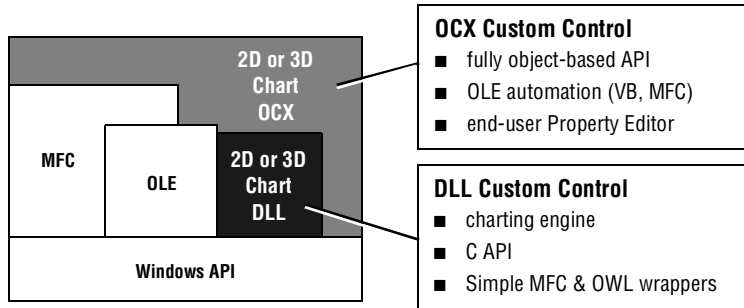
Use the 3D Chart to create 3D surface, contour, or bar charts that end-users can easily rotate, scale, or zoom interactively. 3D Chart can display 3D data in 15 basic surface or bar appearances and automatically generate contours and zones from the data.



Olectra Chart OCX/DLL Control Model

When choosing the control (2D or 3D) and format (OCX or DLL) for your applications, it is useful to understand the functionality and relationship between the DLL and OCX format of each control.

The DLL control is the “charting engine” for both the OCX and DLL. It stores the internal values of the chart’s properties and performs axis calculations and all low-level chart functions. The OCX builds on this charting engine, adding a fully object-based API, support for OLE automation, persistence, and an end-user Property Editor. The following diagram illustrates this relationship.



Quick Start Overview for OCX Programmers

Olectra Chart provides the following sample source code, sample chart description and data files, and documentation, to get you productive with the product as quickly as possible.

	2D Chart Location ^a	3D Chart Location ^a
Demo Launcher	<ul style="list-style-type: none"> ■ Handy program provides brief explanations about each demo and runs precompiled versions of the demos ■ Icon is located in the Olectra Chart Program Group 	
Visual Basic Sample Code	CHART\2D\DEMOS\VB	CHART\3D\DEMOS\VB
Delphi Sample Code	CHART\2D\DEMOS\DELPHI	CHART\3D\DEMOS\DELPHI
Visual C++ Sample Code	CHART\2D\DEMOS\VC	CHART\3D\DEMOS\VC
Sample Charts	CHART\2D\SAMPLES	CHART\3D\SAMPLES
Sample Data	CHART\2D\DATA	CHART\3D\DATA
Documentation	<ul style="list-style-type: none"> ■ Display context-sensitive online help from Visual Basic's Object Browser or from the chart's Property Editor ■ Complete online documentation is available as an icon in the Olectra Chart program group ■ Online tutorial (accessed from the main help file) to get you up and running quickly ■ The printed <i>2D OCX Programmer's Guide and Reference Manual</i> and <i>3D OCX Programmer's Guide and Reference Manual</i> 	

a. Directory paths are relative to the directory you installed Olectra Chart into.

Adding Controls to Visual Basic Projects

As registered OLE controls, the 2D or 3D Chart control can be added to any Visual Basic 4 project using the "Custom Controls..." dialog.

Quick Start Overview for DLL Programmers

Olectra Chart provides the following sample source code, data files, and documentation, to get you productive with the product as quickly as possible.

	2D Chart Location ^a	3D Chart Location ^a
Demo Launcher	<ul style="list-style-type: none"> ■ Handy program provides brief explanations about each demo and runs precompiled versions of the demos ■ Icon is located in the Olectra Chart Program Group 	
Include Files	INCLUDE	INCLUDE
LIB Files	LIB	LIB
Sample Code (SDK, MFC, OWL)	CHART\2D\DEMOS\DLL	CHART\3D\DEMOS\DLL
Sample Data	CHART\2D\DATA	CHART\3D\DATA
Documentation	<ul style="list-style-type: none"> ■ Printed <i>2D DLL Programmer's Guide & Reference Manual</i> and <i>3D DLL Programmer's Guide & Reference Manual</i> ■ Manuals available in Acrobat PDF format on the CD, in the \DLL-DOCS directory. They can be viewed or printed using Adobe Acrobat Reader, freely available from Adobe's web site at: <i>www.adobe.com/prodindex/acrobat/readstep.html</i> 	

a. Directory paths are relative to the directory you installed Olectra Chart into.

Using the Sample Code Makefiles

The makefiles supplied with the sample programs cannot be used as-is because they reference virtual drives. To use these makefiles without editing them, use the DOS **SUBST** command to create this virtual drive, as shown below:

```
SUBST Y: C:\OLECTRA           (Windows 3.x) Visual C++ V1.5 (16-bit)
SUBST X: C:\OLECTRA           (Windows 95 or Windows NT)
                               Visual C++ V4.x or 5.0 (32-bit)
```

Distributing Olectra Chart Applications

You can freely distribute end-user applications you build with Olectra Chart (read the License Agreement in this document for complete details). You need to install one or more Olectra Chart DLLs and/or OCXs on the system that will be running the application.

For a complete list of distributable files, see the section called "Distributing Olectra Chart Applications" in the documentation for the control you are using. For a 2D Chart OCX application, for example, see the 2D Chart online help or the *Olectra Chart 2D OCX Programmer's Guide and Reference Manual*, for a 3D Chart DLL application, see the *Olectra Chart 3D DLL Programmer's Guide & Reference Manual*.

Summary of New Features in 5.0

New Features in 2D

New Features in 3D

New Features in 2D Chart

The following new features have been added to the 2D OCX and DLL.

New Chart Types

- HiLo
- HiLoOpenClose (can also display Error Bar charts)
- Candle
- Polar
- Radar
- Filled Radar

Stacking Bar Chart Enhancements

- Negative values are now displayed below the X-axis.
- 100 Percent stacking bars are now supported.
- Floating bars are now supported by hiding individual sets; see Data Handling Enhancements below.

New Axis Annotation Formatting

- Axis can be formatted in a number of custom Numbering, Accounting, Currency, Percentage or Scientific formats (used only when the annotation method is Values).

Data Handling Enhancements

- Chart data uses a new object-based API. Using data objects insulates your application from future changes in the internal data structures. **XrtData** structures are supported for this release, however. (DLL only)
- Ability to chart a subset of the data by specifying the first/last series and first/last point to chart.

- Each series can now be *hidden* (charted as a blank space) or *excluded* (not considered part of the chart data).
- Bind a chart to an external data source using the new **Datasource** property. (OCX only)
- Load data or a chart description file from a URL using the new **LoadURL** method. (OCX only)

User-Interaction Enhancements

- New axis-zoom enables end-users to zoom in on a chart without losing the axes. To perform an axis-zoom, press shift, hold down the left mouse button, and drag the mouse to draw the area to zoom into; then release the mouse button.
- **Pick** method now returns chart coordinates when a header or footer overlapping the chart area is picked.

3D Effect Enhancements

- Rotation and inclination angles can now be from -45 to 45 degrees.
- Shading method can be customized to use fewer colors using the new **Shading** property.

Text Area Enhancements

- Text areas have been made easier to use with a new object-based API. An application creates text objects and sets their attributes without dealing with the underlying data structures. (DLL only)
- Text inside a text object can now be rotated 0, 90, or 270 degrees.

Transferring Data (OCX Only)

- New methods to quickly copy data to and from the chart. These methods enable you to transfer an array with a single call. The new methods added are: **CopyXVectorIn**, **CopyXVectorOut**, **CopyYVectorIn**, **CopyYVectorOut**, **CopyYArrayIn**, **CopyYArrayOut**.

Data and Series Editor Dialogs (OCX Only)

- Use the Edit Chart 2D Data dialog to quickly edit chart data.
- Use the Edit Chart 2D Series dialog to hide, show or exclude a series from the chart.
- These dialogs are located on the **ChartGroups** tab's **Data** subtab.

Other Visual Enhancements

- 3 new border types: **Frame In**, **Frame Out** and **Bevel**.
- The line drawn around bars, pies, and filled areas can now be changed using the new **ForegroundColor** property – and the line itself can be removed using the new **IsShowOutlines** property.
- X- and Y-marker appearance can be customized individually using separate X- and Y-marker data styles.
- Add background images to different chart elements (ChartArea, Header and Footer titles, Legend, ChartLabels).

Support for JPEG/PNG Output

Charts can now be saved in either JPEG or PNG file formats.

Oletra Chart Safe for Scripting

Oletra Chart is now safe for scripting when used inside a web browser. The chart (or any of the chart's methods) does not allow users to write to a local drive when used within a secure web browser. Also, Oletra Chart will not execute any binary code (for example, a virus) that is passed to it as data.

Compliance with Authenticode 2.0

Oletra Chart now complies with Authenticode 2.0, used by Microsoft Internet Explorer to verify registered ActiveX controls.

Oletra Chart Now Uses the Hosting Container's Default Fonts

Oletra Chart now uses the host container's exposed ambient font as its own default font.

32-bit DLL and OCX merged

The 32-bit DLL and OCX files have been merged, so that OCX/ActiveX programmers do not have to distribute the DLL with their Oletra Chart applications.

Added Support for URLs with Relative Paths

Oletra Chart can now load data and .OC2/.OC3 files from URLs that contain relative paths. For example, the following are now valid URLs:

```
..\Oletra\Chart\Data\1992.dat  
.\Bar_data\chart32.oc2
```

Other Enhancements

- New pie chart method that determines which sets have been grouped into the *other* slice.

New Features in 3D Chart

The following new features have been added to the 3D OCX and DLL.

Data Handling Enhancements

- Load data or a chart description file from a URL using the new **LoadURL** method. (OCX only)

Text Area Enhancements

- Text inside a text object can now be rotated 0, 90 or 270 degrees.

Transferring Data (OCX Only)

- New methods to quickly copy data to and from the chart. These methods enable you to transfer an array with a single call. The new methods added are: **CopyZArrayIn**, **CopyZArrayOut**.

Data and Series Editor Dialogs (OCX Only)

- Use the Edit Chart 3D Data dialog to quickly edit chart data.
- Use the Edit Chart 3D Row Delta dialog to change the spacing between rows.
- Use the Edit Chart 3D Column Delta dialog to change the spacing between columns.
- These dialogs are located on the **ChartGroup** tab's **Data** subtab.

Support for JPEG/PNG Output

Charts can now be saved in either JPEG or PNG file formats.

Olectra Chart Safe for Scripting

Olectra Chart is now safe for scripting when used inside a web browser. The chart (or any of the chart's methods) does not allow users to write to a local drive when used within a secure web browser. Also, Olectra Chart will not execute any binary code (for example, a virus) that is passed to it as data.

Compliance with Authenticode 2.0

Olectra Chart now complies with Authenticode 2.0, used by Microsoft Internet Explorer to verify registered ActiveX controls.

Olectra Chart Now Uses the Hosting Container's Default Fonts

Olectra Chart now uses the host container's exposed ambient font as its own default font.

32-bit DLL and OCX merged

The 32-bit DLL and OCX files have been merged, so that OCX/ActiveX programmers do not have to distribute the DLL with their Oletra Chart applications.

Added Support for URLs with Relative Paths

Oletra Chart can now load data and .OC2/.OC3 files from URLs that contain relative paths. For example, the following are now valid URLs:

```
..\Oletra\Chart\Data\1992.dat  
.\Bar_data\chart32.oc2
```

Other Visual Enhancements

- 3 new border types: **Frame In**, **Frame Out** and **Bevel**.
- Add background images to different chart elements (PlotArea, Header and Footer titles, Legend, ChartLabels).

Technical Support & Feedback

*Technical Support Plans ■ How to Get Technical Support
Olectra Developers Forums ■ Give us Feedback*

Technical Support Plans

KL Group's Customer Service Team provides a variety of support options to suit your needs.

Standard Support (included with purchase)

- 30 days of technical support, beginning with your first call.
- Access to additional example and demo programs, FAQs, and minor product updates on KL Group's Web site.
- Quarterly olectra@klg.com technical news flash mailing.

Gold Support

At an additional cost, you can receive the benefits of Standard Support for a full year.

Gold Support with Subscription

This premium support provides all of the benefits of Gold Support plus product updates and bug fixes sent to you automatically for a full year.

To purchase Gold Support or Gold Support with Subscription, contact the Olectra Sales Team at (800) 709-2947 or (416) 594-1026.

How to Get Technical Support

Before Contacting Customer Service

Please have the following information ready when contacting Customer Service:

- Your Olectra Chart serial number (OCX users: select the **About** inner tab on the Property Editor; DLL users: display the SERIAL.TXT file located in Olectra Chart's \CHART subdirectory).
- The version of MS-DOS, Windows, or Windows NT you are using.
- Your development environment and its version.

The KL Group Web and FTP Site

Point your web browser to www.klg.com or FTP client to <ftp.klg.com>. Always available, these sites are the best source of up-to-date technical information, including:

- Updated FAQ list answering common questions
- Updated example and demo programs
- Product updates, bug fixes, minor feature enhancements

Internet Email

Send email to olectra_support@klg.com.

Telephone and Fax Support

Phone (800) 482-6412 or (416) 594-1026 between 9am and 5pm EST.

Fax (416) 594-1919

Olectra Developers Forums

KL Group maintains an Internet electronic mail forum and newsgroup for all developers interested in discussing Olectra products. Developers can use these forums to discuss Olectra programming with other developers around the world.

Olectra Mailing List

To join the mailing list:

- Send email to olectra-request@klg.com with the word “**subscribe**” in the body of the message.

To send a message to everyone on the list:

- Send email to olectra@klg.com

Olectra Newsgroup

To access the newsgroup:

- Point your news reader to: <news://news.klg.com/klg.forum.olectra>

Announcements Mailing List

Occasionally, KL Group sends Olectra-related product announcements to its customers via a mailing list. To add yourself to this mailing list, send email, with the word “**subscribe**” in the body of the message to:

olectra_announce-request@klg.com

Give us Feedback

We are interested in hearing about how you use Olectra Chart, any problems you encounter, or any additional features you would find helpful. The majority of enhancements to Olectra products are the result of customer requests.

Please write, phone, fax or email your comments to:

Olectra Chart Product Manager

KL Group Inc.
260 King Street East
Toronto, Ontario, M5A 1K3 Canada

Phone: (800) 482-6412 or (416) 594-1026

Fax: (416) 594-1919

Email: olectra_support@klg.com

Internet: www.klg.com

